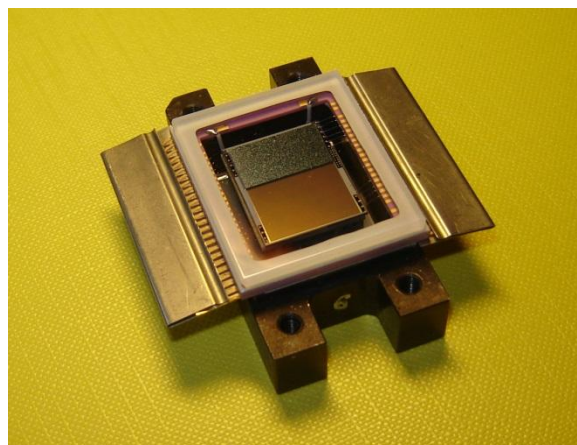


CCD 28M

CCD 28M is a device with two-sections, 768x580 pixels, bulk transfer n-channel, antiblooming, electronic gate and built-in thermoelectric cooler. Main application – operation as a component in TV electrooptical systems for military, industry and science purposes.

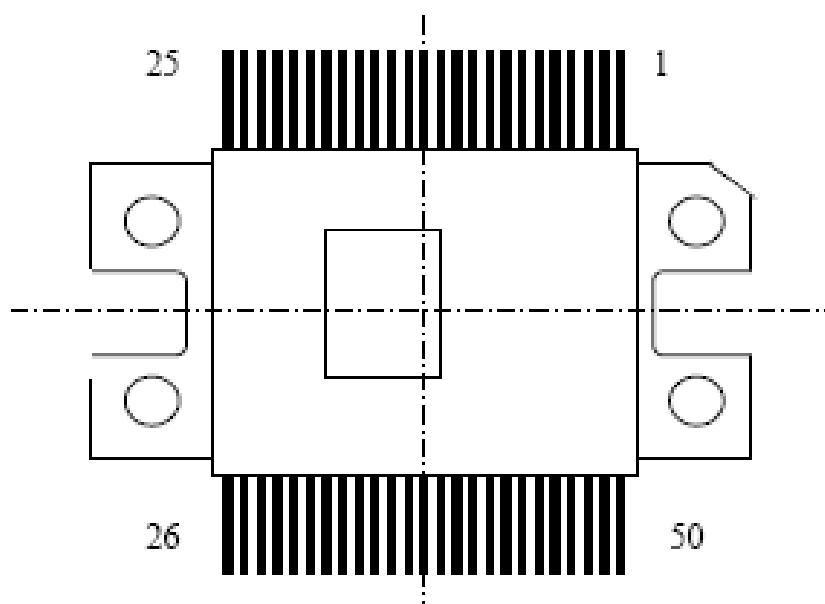
Constructional design: the device has metal-ceramic package with optical input window of K-208 glass. Cooling by thermobattery K2-95-1/3.



SPECIFICATIONS

Number of pixels	768×290
Device photosensitive area size, mm	13.06×9.86
Pixel size, (HxV), μm	17×34
Saturation voltage, V	2.5
Saturation illumination, lx	10
Output signal relative mean square nonuniformity, %	3.5
Average dark signal referred to saturation voltage, %	0.15
Modulation transfer factor along the horizontal in the center: at 400 TL, % at 600 TL, %	90 70
Modulation transfer factor along the vertical in the center at 300 TL, %	60
Threshold illumination at S/N=3, lx	$3 \cdot 10^{-3}$
Dynamic range	10000
Local overillumination suppression factor	1000
Electronic gate ratio	64
Max. temperature range, °C	-60 ÷ +70

EXTERNAL APPEARANCE



SPECTRAL RESPONSE CHARACTERISTICS

